

### UMCOR Fire Relief

The United Methodist Committee on Relief assists United Methodists and churches to become involved globally in direct ministry to people who are experiencing displacement, hunger, poverty, and disasters.



\$25 provides relief kits for California wildfire victims.

### Wesley Foundation-580 Café

Through the Wesley Foundation at UCLA, the 580 Café is a welcoming place for students to get a hot meal, access free Wi-Fi and find community that strengthens them in body, mind and soul.



- \$10 buys pizza for late night study sessions.
- \$20 provides medicine/vitamins to fight a cold.
- \$30 buys fresh fruit and snacks for tackling exams.
- \$100 buys diapers & food for a student with a family.

### Westside Food Bank

Westside Food Bank reaches more than 100,000 people a year – nearly half of whom are children. Four million pounds of food are distributed each year, but WFB struggles to meet the local need. WFB relies on vital support from the faith community, such as WUMC, to help feed those in need.



- \$5 buys 6 jars of nutritious baby food.
- \$10 buys 12 cans of hearty beef stew.
- \$25 buys 50 pounds of vitamin rich yams.
- \$50 buys 35 dozen fresh eggs.

## EXTEND THE TABLE CAMPAIGN

### Clergy Defense Fund

The Clergy Defense Fund, jointly funded through the Reconciling Ministries Network, will offset personal expenses of those under complaint in the UMC for offenses of conscience against the exclusionary policies of the Traditional Plan and the Book of Discipline.

- \$30 provides hotel support for volunteer counsel.
- \$40 provides physical space for defense preparation.
- \$50 provides travel support for a defendant.

### La Oportunidad

Since 1992, La Oportunidad has provided a place where persons living on the margins of society have come together to form community and find compassion, acceptance and a helping hand.

- \$10 buys Cup O’Noodles soup for one day.
- \$25 buys new socks and underwear for 3 people.
- \$40 provides coffee service for a 12-step program.

### Transforming Family

Transforming Family is a Los Angeles based family support group creating a positive environment for children, adolescents and their families to explore issues of gender identity.

- \$25 buys arts and crafts materials for the elementary-age play group.
- \$50 buys materials for a parent education workshop on gender diversity.
- \$100 provides support for family events outside of the group.

### UM Forward

UMForward exists to lead the church into celebration of queerness and the holiness of POC+Q+T people; to advance liberation of the marginalized, to propel the UMC forward; to challenge the establishment; and to proclaim joy and celebration of PoC+Q+T spirituality. Your donation aids in the important work of Liberation.

\$20 - liberation.

# Shop With A Purpose

Invite your friends and join us for a festive shopping experience with holiday music and hot apple cider. As you shop, there are two ways to pay it forward this Christmas:

### IMPACT GIFTS

As you look through this brochure, we invite you to choose an organization that’s making a positive impact in our world, make a donation in someone’s name, and receive a personalized card to give. There are two ways to make this donation.

- 1. Stop by the Scattered for Service event** in Helms Hall on Sunday, December 1st or 8th (8:30-10am and 11am-12:30pm).
- 2. Or, email your request** to [sabrina@westwoodumc.org](mailto:sabrina@westwoodumc.org) and provide the following info for each donation you would like to make:
  - Name of the organization.
  - Donation amount.
  - How the gift card will be personalized.  
“A gift has been given in your honor by \_\_\_\_\_.”
  - Will you pick up the card(s) at church or should we mail them?
  - Will you make your donation at [www.WestwoodUMC.org/give](http://www.WestwoodUMC.org/give) by selecting “Scattered Impact Gifts” in the dropdown menu or by providing a check at church?

### FAIR TRADE GIFTS

Provided by our partners at Fair Trade Winds, a wide variety of certified fair trade and environmentally sustainable products are available for purchase as a way to support artisans, farmers, and craft-people around the globe. Fair Trade Winds donates 10% of the gross product sold at Scattered for Service back to Westwood Church, and those proceeds cover the costs of putting on the event plus other administrative expenses throughout the year.



This year, Fair Trade Winds is also offering an opportunity to shop online and save 5% off your order by using the coupon code WUMC2019 at [www.fairtradewinds.net](http://www.fairtradewinds.net). The coupon is good from Nov 17th to Dec 17th, but it is not applicable on sale items and not combinable with other discounts.

## WESTWOOD CHURCH

10497 Wilshire Blvd.  
Los Angeles, CA 90024  
Phone: 310.474.4511

Plenty of free parking in the structure under Belmont Village east of the church.

[www.WestwoodUMC.org](http://www.WestwoodUMC.org)

# Scattered for Service

Sundays, December 1st & 8th  
8:30-10am & 11am-12:30pm  
Westwood Church (Helms Hall)



Pay It Forward As You Shop for Family and Friends  
at Our Advent Giving Marketplace  
[www.ChristmasAtWestwood.com](http://www.ChristmasAtWestwood.com)

## NON-PROFITS WE SUPPORT

### Argrow's House

Argrow's House is a safe space in Davenport, Iowa, where free services are offered daily for women healing from violence and abuse. Services range from domestic violence support group, therapeutic horseback riding, art therapy, and more. Argrow's House is also a bath and body social enterprise that provides a good living wage for women survivors of violence.



- \$22 provides 7 pounds of olive oil.
- \$29 provides 5 pounds of natural shea butter.
- \$65 provides 28 pounds of coconut oil.

### Alexandria House

Alexandria House is a non-profit transitional residence and house of hospitality providing safe and supportive housing for low income women and children in the process of moving from emergency shelter to permanent housing. Located in the ethnically diverse Mid-Wilshire area, Alexandria House also serves its broader neighborhood community by providing educational and enrichment opportunities for residents and neighbors alike. Westwood's United Methodist Women is supporting Alexandria House families in its mission outreach work.



- \$10 will help provide Metro passes.
- \$25 will buy a gift card to be given to a resident for a special occasion.
- \$50 will cover the cost of plates, silverware and a toaster.
- \$100 will help buy a family's groceries and much needed clothing.

### Guide Dogs of America

Guide Dogs of America's goal is to assist people with vision loss to rebuild their independence and improve their quality of life by providing a highly trained guide dog who will be with them every step of the way. Each dog must train for two years to become an everyday hero in someone's life.



- \$10 buys chew toys for a dog-in-training.
- \$25 provides a training kit for a Labrador puppy.
- \$50 buys healthy food for an active Golden Retriever for 1 month.
- \$100 assembles a graduation kit for a graduate German Shepherd.

### Habitat for Humanity of Greater Los Angeles

Habitat LA brings people together to build homes, communities and hope. Los Angeles is one of the least affordable housing areas in the U.S., and Habitat LA is one of the few affordable homeownership programs that serves families and individuals earning 30-80% of the median family income. Working with families, volunteers, congregations, corporations, and donors, Habitat LA makes homeownership possible for low-income, hardworking families and individuals.



- \$25 provides a box of nails.
- \$50 builds a bedroom wall.
- \$35 puts shingles on a roof.
- \$100 provides a gift card to the Habitat ReStore.

### Heifer International

Heifer International's mission is to work with communities to end world hunger and poverty and to care for the Earth. Those who receive Heifer gifts become donors and pass on the gift of possibilities to others in the community.



**Shear Joy Sheep** - Wool is a valuable product that families can use for clothing or sell for extra income. Share of a sheep \$ 10 or gift of a sheep \$120.

**Christmas Chicks** - Eggs enrich a child's diet and can also be sold for extra income. Chicken help control insects and fertilize gardens. Flock of chicks \$20.

### Hope Animal-Assisted Crisis Response

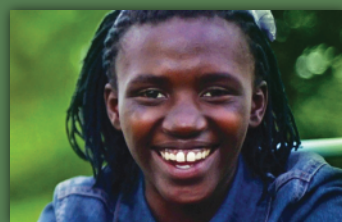
HOPE Animal-Assisted Crisis Response is a national all-volunteer, non-profit crisis response organization with specially trained handlers (psychological first aid, incident command, etc) and canines trained and tested for crisis response work. Agencies call upon HOPE AACR teams to provide comfort and support to people affected by disasters.



- \$25 will help fund call-outs to distant areas.
- \$50 will help cover training and equipment for new dogs.

### International Justice Mission

International Justice Mission is a global organization dedicated to ending slavery. Over 40 million people are trapped in slavery right now, including children as young as 4 years old. IJM rescues victims, restores survivors, brings criminals to justice, and strengthens justice systems in local areas. The staff includes more than 750 lawyers, investigators, social workers, and community activists in 17 field offices around the world. So far, IJM has rescued upwards of 40,000 people from violence and oppression.



- \$7 provides a hot meal for a survivor of violence.
- \$30 covers trial fees so a survivor's case can be heard in court.
- \$80 buys school supplies for a rescued child.
- \$100 sponsors a top-notch lawyer to help represent a survivor in court.
- \$150 helps fund a slavery rescue operation.

### Level Ground

Level Ground creates space for dialogue about faith, gender, and sexuality through the arts. Their work aims to inspire empathy, create community, and cultivate a better way of speaking across diverse experiences and identities. This year, Level Ground produced 75 festival and community events with more than 600 artists, speakers, and attendees. Your support helps their programming reach more people and create even more meaningful experiences for them.



- \$25 covers a workshop scholarship for one attendee.
- \$50 covers one festival scholarship pass.
- \$100 covers basic honorarium for a special guest speaker or artist.

### Meals on Wheels West LA

It's no wonder that Meals on Wheels' motto is "Delivering Smiles One Meal at a Time." MOW has been delivering meals to homebound people in West LA since 1976. Members of WUMC continue to serve as volunteers who are the critical link for the clients and their loved ones.



- \$7 lets a senior enjoy a hot midday meal.
- \$35 provides a week's worth of diabetic meals.
- \$50 delivers hot meals, volunteer visits and smiles to someone for a week.

### Meals with Hope

Members of Westwood UMC and Wesley Foundation at UCLA students partner on the second Saturday of each month to share lunch with those in need in West LA at Kardia UMC. The motto of Meals with Hope is "Food, Community, Prayer." A short devotional from Scripture and a prayer are shared before guests and volunteers break bread together in community.



- \$45 purchases the makings for a main course.

### Médecins Sans Frontières (Doctors Without Borders)

On any given day, more than 30,000 MSF staff are in the field consulting with patients, carrying out surgical procedures, and delivering babies. In more than 70 countries worldwide, MSF provides assistance to overwhelmed local health systems during catastrophic events such as armed conflict, epidemics, malnutrition, or natural disasters.



- \$18 buys two quality meals a day for 100 children.
- \$25 provides 25 vaccinations against meningitis, measles, & other epidemics.
- \$35 provides a basic suture kit to repair minor shrapnel wounds.
- \$50 provides infection fighting antibiotics to treat nearly 20 wounded children.

### P.A.T.H. (People Assisting the Homeless)

PATH currently supports more than 3,500 formerly homeless people in apartments, and provides services to nearly 13% of California's homeless population. PATH first connects people to permanent housing and then focuses on stabilization through voluntary supportive services, including case management, medical and mental health-care, benefits advocacy, employment training, and other services to help them maintain their homes. PATH serves over 140 cities across the state; moves nearly 25 people formerly living on the streets into their own homes every week; and provides much-needed emergency housing for over 1,000 people.



- \$25 provides a bedside lamp.
- \$50 provides pots, pans, and utensils.
- \$100 provides a dresser/chest of drawers.
- \$250 provides a dining room set.

### Prayerful Stitches

Prayerful Stitches is a prayer response team that knits and crochets items that are given to anyone going through a difficult time. Most often the group makes prayer shawls – or blankets and caps for premature babies. These items symbolize the way our community has come together to create comfort, warmth and support in an intentional, prayerful way.



- \$25 buys yarn for a prayer shawl or baby blanket.

### Saving Innocence

Saving Innocence rescues child victims of sex trafficking 24 hours a day – 7 days a week by providing on-the-ground help through strategic partnerships with law enforcement, social service providers and schools, while mobilizing communities to prevent abuse and increase neighborhood safety. Without the comprehensive services that Saving Innocence provides, children across the country would not receive the rehabilitation they need to survive, and predators would go unpunished.



- \$15 provides a duffle bag for clients to transport their new belongings.
- \$25 buys a gift card for clients to rebuild their wardrobe.
- \$175 sponsors a crisis bag with basic necessities at the time of rescue.

### Sierra Service Project

As a core part of our youth ministry, SSP is all about building homes, communities, bridges between people, and a relationship with God. Rise up and build with us!



- \$10 buys two bags of cement to help build a school.
- \$25 buys a gallon of paint for a bedroom.
- \$50 sponsors a teen's summer experience.
- \$100 buys a quality power tool for repairing a roof on a Native American reservation.